

**DESCRIPTION AND INSTALLATION
OF SUSPENDED CEILING PANELS**

Test 6
Date 09/15/16
Station ALPHA

REQUESTER, MANUFACTURER SAINT-GOBAIN EUROCOUSTIC

NAME PROTISOL 05

CONFIGURATION 50 mm high construction

FITNESS FOR PURPOSE Unchecked

MAIN CHARACTERISTICS

Dimensions in mm : 2980 x 3580
Area in m² : 10.6
Thickness in mm : 50
Mass per unit area in kg/m² : 2.6

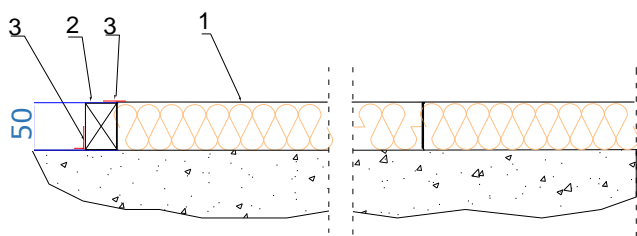
DESCRIPTION (dimensions are given in mm)

Panels	
Constitution	Stone wool panel of measured density 53 kg/m ³ , with painted fibreglass surface on the visible face.
Dimensions	1200 x 600 x 50.
Edge	Right.

INSTALLATION (dimensions are given in mm)

The panels are put edge to edge with the painted face visible, on the floor in order to create a pattern of 3000 x 3000 inside a MDF 30 thick frame laid on the floor.

The whole assembly is set up to create a 50 high construction. An aluminium tape provide the sealing between the floor and the MDF.



- 1 Panels
- 2 MDF
- 3 Aluminum tape



**SOUND ABSORPTION COEFFICIENT α_s
OF SUSPENDED CEILING PANELS**

Test 6
Date 09/15/16
Station ALPHA

AA45

REQUESTER, MANUFACTURER SAINT-GOBAIN EUROCOUSTIC

NAME PROTISOL 05

CONFIGURATION 50 mm high construction

FITNESS FOR PURPOSE Unchecked

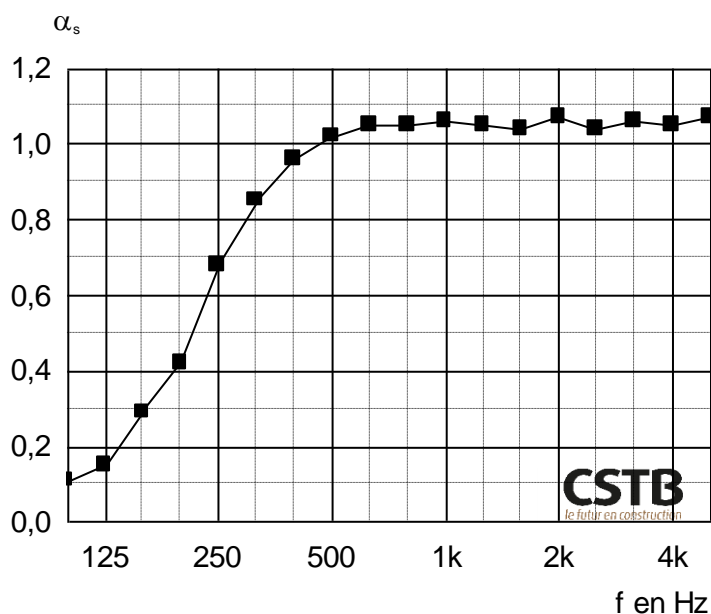
MAIN CHARACTERISTICS

Dimensions in mm : 2980 x 3580
Area in m² : 10.6
Thickness in mm : 50
Mass per unit area in kg/m²: 2.6

MEASUREMENT CONDITIONS

Empty room: Temperature: 24.5 °C
Relative humidity: 67 %
Room with sample: Temperature: 24.5 °C
Relative humidity: 67 %

RESULTS



f	α_s
100	0,11
125	0,15
160	0,29
200	0,42
250	0,68
315	0,85
400	0,96
500	1,02
630	1,05
800	1,05
1000	1,06
1250	1,05
1600	1,04
2000	1,07
2500	1,04
3150	1,06
4000	1,05
5000	1,07
Hz	

$\alpha_w = 0,95$
classement : A

NRC = 0,95
SAA = 0,94